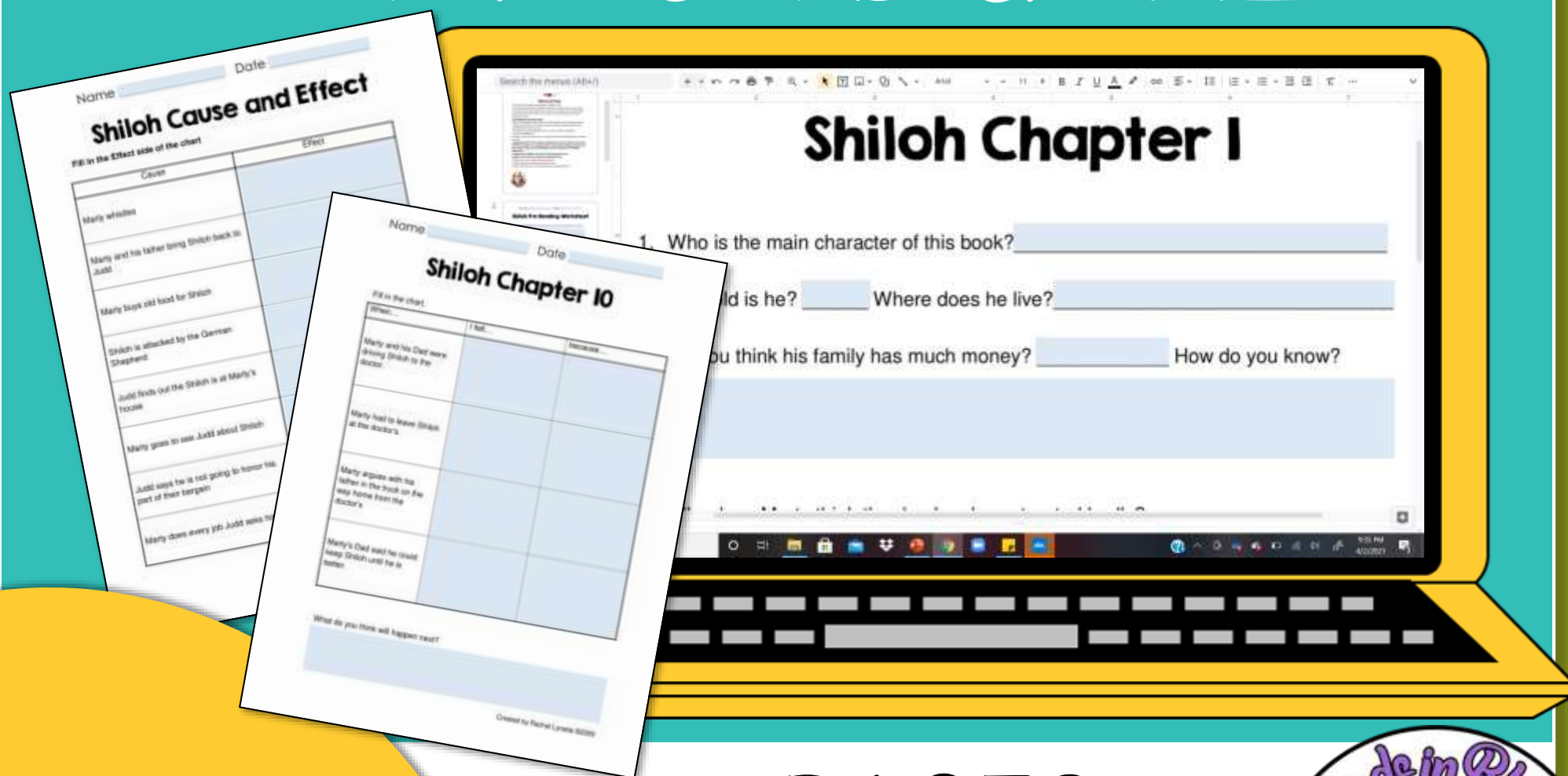


3<sup>rd</sup>-8<sup>th</sup>

# SHILOH

## CHAPTER QUESTIONS

PRINT OR DIGITAL



GOOGLE  
SLIDES  
ACTIVITY

18 PAGES  
READY TO USE!



# PRINT & GO

Name \_\_\_\_\_ Date \_\_\_\_\_

## Shiloh Characters

Write about each of these characters. Make your sentences interesting and informative.

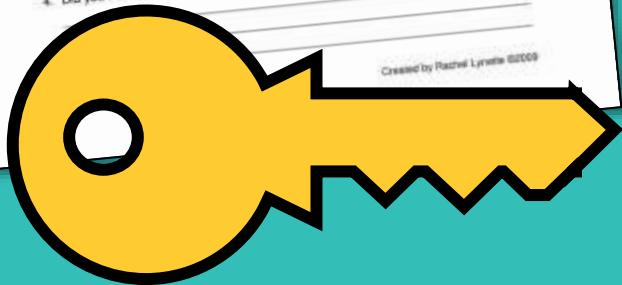
Marty	Marty's Mom
	Marty's Dad

Name \_\_\_\_\_ Date \_\_\_\_\_

## Shiloh : The Movie

- Why do you think the people who made the movie added Sam?  
Do you think this was a good change? \_\_\_\_\_ Why or why not?
- Why do you think they added the scene when the doctor tells Marty about how they got Sam?  
Do you think this was a good change? \_\_\_\_\_ Why or why not?
- Why do you think they changed the ending and added the scene when Judd comes to Marty's house to get Shiloh?  
Do you think this was a good change? \_\_\_\_\_ Why or why not?
- Did you like the book or the movie better? \_\_\_\_\_ Why?

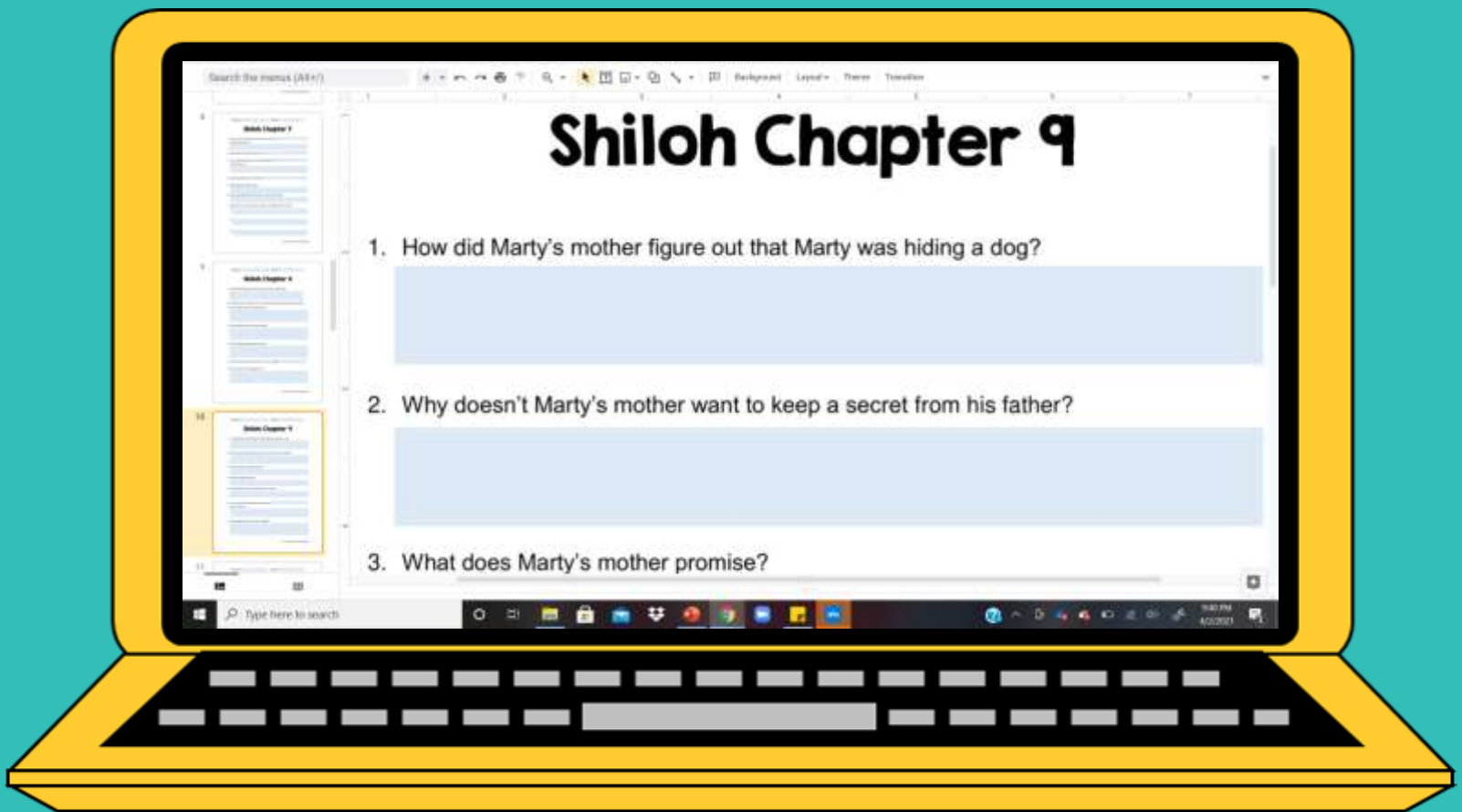
Created by Rachel Lynette ©2009



<b>Shiloh Chapter 1</b>	<b>Shiloh Chapters 2-3</b>	<b>Shiloh Chapter 4</b>	<b>Shiloh Chapter 5</b>
<b>Shiloh Chapter 6</b>	<b>Shiloh Chapter 7</b>	<b>Shiloh Chapter 8</b>	<b>Shiloh Chapter 9</b>
<b>Shiloh Chapter 10</b>	<b>Shiloh Chapter 11</b>	<b>Shiloh Chapters 12-13</b>	<b>Shiloh Chapter 14</b>
<b>Shiloh Chapter 15</b>	<b>Shiloh Independent Projects</b>	<b>Shiloh Plot Summary</b>	<b>Shiloh Cause and Effect</b>

# INCLUDES ANSWER KEY!

# DIGITAL OPTION



# GOOGLE SLIDES

# Here's What Teachers are Saying!

“Great resource to print and use! Excellent questions that let the kids think and respond.”

