

# I ♥ LITERACY INNOVATION

NO PREP  
MINI PACK

**ROBOTS**

1. Underline possessive pronouns:  
The boy showed me how his robot worked.

2. What is a Robot?  
When you imagine a robot, you picture a machine that looks and acts like a person. That would only be partially correct. A robot is a machine. Specifically, it is a machine that does tasks without help from a person. However, most robots do not look like people at all. They are built to perform specific tasks, so how they look depends on what they were built to do. For example, a robot that is meant to work in a factory might look a little like an arm with a hand for holding and moving the parts of whatever it is building.

3. Which of these is not true about the word robot?  
I use my robot everyday.

4. Write E if the statement is a fact. Write O if the statement is an opinion.  
Fun Fact: The fear of being without your smartphone is called nomophobia.

5. Rewrite each sentence with the correct punctuation.  
Can you 3-D print a pencil?

6. Underline the adjectives. Double underline the adverbs.  
The curious woman carefully examined the ancient vase.

7. How 3-D Printing Works  
3-D printing is also called Additive Manufacturing. It is a process of creating a three-dimensional object from a digital file. An object that has been printed using 3-D printing is made of many layers. The layers are fused to the layer beneath it. The end product is a solid object. 3-D printing is used to create many things, including prosthetic limbs, medical tools, and even houses.

8. In the passage above, underline four sentences in which commas are used to divide items in a series.

9. Fill in the correct word/phrase.  
Ware/Where  
that  
great/grate

10. Which text structure was used to write this passage?  
a) description b) problem c) cause and effect d) compare

11. Possessive pronouns, summarizing, word work

**SMARTPHONES**

1. Underline possessive pronouns:  
The boy showed me how his robot worked.

2. What is a Robot?  
When you imagine a robot, you picture a machine that looks and acts like a person. That would only be partially correct. A robot is a machine. Specifically, it is a machine that does tasks without help from a person. However, most robots do not look like people at all. They are built to perform specific tasks, so how they look depends on what they were built to do. For example, a robot that is meant to work in a factory might look a little like an arm with a hand for holding and moving the parts of whatever it is building.

3. Which of these is not true about the word robot?  
I use my robot everyday.

4. Write E if the statement is a fact. Write O if the statement is an opinion.  
Fun Fact: The fear of being without your smartphone is called nomophobia.

5. Rewrite each sentence with the correct punctuation.  
Can you 3-D print a pencil?

6. Underline the adjectives. Double underline the adverbs.  
The curious woman carefully examined the ancient vase.

7. How 3-D Printing Works  
3-D printing is also called Additive Manufacturing. It is a process of creating a three-dimensional object from a digital file. An object that has been printed using 3-D printing is made of many layers. The layers are fused to the layer beneath it. The end product is a solid object. 3-D printing is used to create many things, including prosthetic limbs, medical tools, and even houses.

8. In the passage above, underline four sentences in which commas are used to divide items in a series.

9. Fill in the correct word/phrase.  
Ware/Where  
that  
great/grate

10. Which text structure was used to write this passage?  
a) description b) problem c) cause and effect d) compare

11. Possessive pronouns, summarizing, word work

**3-D PRINTING**

1. Underline possessive pronouns:  
The boy showed me how his robot worked.

2. What is a Robot?  
When you imagine a robot, you picture a machine that looks and acts like a person. That would only be partially correct. A robot is a machine. Specifically, it is a machine that does tasks without help from a person. However, most robots do not look like people at all. They are built to perform specific tasks, so how they look depends on what they were built to do. For example, a robot that is meant to work in a factory might look a little like an arm with a hand for holding and moving the parts of whatever it is building.

3. Which of these is not true about the word robot?  
I use my robot everyday.

4. Write E if the statement is a fact. Write O if the statement is an opinion.  
Fun Fact: The fear of being without your smartphone is called nomophobia.

5. Rewrite each sentence with the correct punctuation.  
Can you 3-D print a pencil?

6. Underline the adjectives. Double underline the adverbs.  
The curious woman carefully examined the ancient vase.

7. How 3-D Printing Works  
3-D printing is also called Additive Manufacturing. It is a process of creating a three-dimensional object from a digital file. An object that has been printed using 3-D printing is made of many layers. The layers are fused to the layer beneath it. The end product is a solid object. 3-D printing is used to create many things, including prosthetic limbs, medical tools, and even houses.

8. In the passage above, underline four sentences in which commas are used to divide items in a series.

9. Fill in the correct word/phrase.  
Ware/Where  
that  
great/grate

10. Which text structure was used to write this passage?  
a) description b) problem c) cause and effect d) compare

11. Possessive pronouns, summarizing, word work

**HIGH-SPEED RAIL**

1. Circle the words that have to do with speed. Cross out the words that have to do with moving slowly.  
Fast Trains  
High-speed rail are rail systems that are designed for trains that run much faster than traditional trains. The fastest of these trains can run at speeds exceeding 200 mph (320 km/h). These trains do not share tracks with traditional trains. Instead, they have their own tracks, built for high speed. What is the main idea?

2. Write this sentence correctly.  
the fastest train in the world is located in China

3. Fill in the blank with the correct adjective.  
The space station is the \_\_\_\_\_ human-made structure in space. large/larger/largest

4. The three astronauts traveled in the spacecraft Soyuz from Earth to the International Space Station.  
★ Would you want to live for 6 months on the International Space Station? Why or why not?

**THE INTERNATIONAL SPACE STATION**

1. Rewrite the sentence correctly.  
most Astronauts lives in the space station four 6 months?

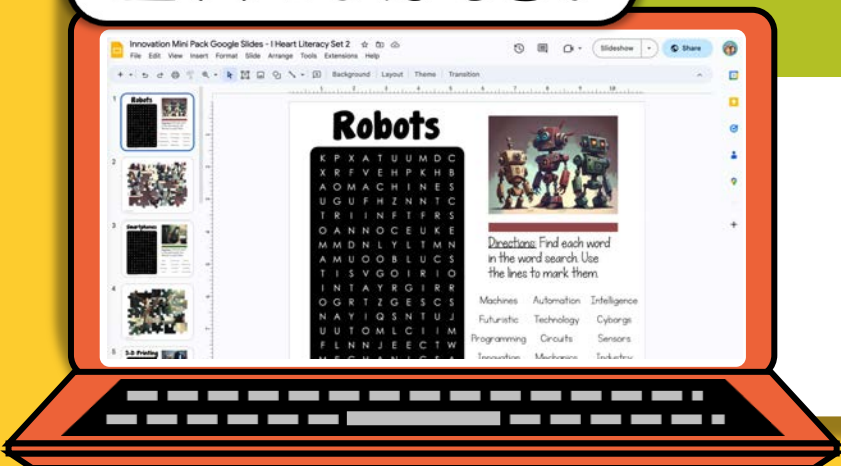
2. Astronauts are weightless in the International Space Station because there is no gravity. What does the suffix -less mean?  
a) able to b) without c) full of d) relating to

3. What Happens in the Station?  
Since its launch in 1998, the International Space Station has hosted more than 230 people from 18 different countries. There are up to 6 astronauts living in the station at any one time. In addition to maintaining the station, the astronauts run a variety of scientific experiments. Many of these experiments are focused on human health. They want to know how living in a weightless environment affects muscles, bones, eyes, and other parts of the body. The astronauts also run experiments on plants and work with robots and other technologies. These experiments will make space exploration safer and easier in the future. What is the purpose of the International Space Station?

4. Write F if the statement is a fact. Write O if it is an opinion.  
\_\_\_\_\_ Space Station astronauts are brave.  
\_\_\_\_\_ Astronauts at the space station float instead of walking.  
\_\_\_\_\_ It takes 93 minutes for the space station to orbit the Earth.  
\_\_\_\_\_ The astronauts at the space station do important work.  
\_\_\_\_\_ Sometimes, the astronauts at the station go on space walks.

5. How many prepositional phrases are in this sentence?  
The three astronauts traveled in the spacecraft Soyuz from Earth to the International Space Station.

DIGITAL  
EXTRAS!



ELA and  
Reading Skills



# 5 THEMED REVIEWS

## THE INTERNATIONAL SPACE STATION

**Fun Fact:** The station orbits the Earth 15 times each day.

1 Rewrite the sentence correctly.  
most Astronauts lives in the space station four 6 months?

2 Astronauts are weightless in the International Space Station because there is no gravity.  
What does the suffix -less mean?  
a) able to b) without c) full of d) relating to

3 What happens in the Station?  
Since its launch in 1988, the International Space Station has hosted more than 230 people from 18 different countries. There are up to 6 astronauts living in the station at any one time. In addition to maintaining the station, the astronauts run a variety of scientific experiments. Many of these experiments are focused on human health. They want to know how living in a weightless environment affects muscles, bones, eyes, and other parts of the body. The astronauts also run experiments on plants and work with robots and other technologies. These experiments will make space exploration safer and easier in the future. What is the purpose of the International Space Station?

4 Fill in the blank with the correct adjective.  
The space station is the \_\_\_\_\_ human-made structure in space.  
a) largest/larger/largest b) smallest/smaller/smallest

**Editing:** suffix, main idea, fact and opinion, comparative/superlative adjective.

## PRINTING

**Fun Fact:** 3-D printers are sometimes used to make movie props.

1 Add a conjunction to make a compound sentence.  
Sentence with the correct punctuation.  
Can you 3-D print a pencil holder Kyra asked

2 We lost one of the pieces for our game. I made a new one with a 3-D printer.

3 Divide each word into base word and a suffix.  
imagined base word suffix  
layering  
fused  
programmer

4 Cross out the incorrect homophones and write the correct ones.  
In the future, people may be able to 3-D print items they knead rather than buying knead ones.

5 If you had access to a 3-D printer, what are 3 things you would print? Explain why you picked those 3 things.

**Editing:** suffixes, parts of speech (adjectives and adverbs), participles, homophones.

## SMARTPHONES

**Fun Fact:** The fear of being without your smartphone is called nomophobia.

1 Write E if the statement is a fact. Write Q if the statement is an opinion.  
The first cellphone call was made in 1973.  
Smartphones are too expensive.  
About 70% of smartphones are made in China.  
You can use a smartphone to take pictures.  
Kids should not bring smartphones to school.

2 Underline the prepositional phrases: I took my smartphone off of the table and put it in my pocket.

3 Add the suffix -ly to each of the base words in the box and then use the new words to complete the story.  
sad patient fortunate accident polite careful  
My mom \_\_\_\_\_ dropped her smartphone on the floor. \_\_\_\_\_, the screen was cracked. \_\_\_\_\_, my mom had bought insurance. We went to the phone store where the salesman greeted us \_\_\_\_\_ He took my mom's phone and we \_\_\_\_\_ for it to be fixed. He returned \_\_\_\_\_ gave my mom back her phone. The screen was fixed \_\_\_\_\_ and my mom was happy!

4 How would life be different without smartphones? List 10 ways.

**Editing:** prepositional phrases, context clues/verb form, context clues/noun/verb, editing.

## SPEED RAIL

**Fun Fact:** The first high-speed rail is more than 50 years old. It is called the Bullet Train and runs between Tokyo and Osaka in Japan.

1 Use the plural form of each word in the box to fill in the blanks.  
minute person city hour  
High-speed rail is often used to connect major \_\_\_\_\_.  
\_\_\_\_\_ can travel much faster on a high-speed train. A trip that used to take four \_\_\_\_\_ would only take about 45 \_\_\_\_\_.

2 Select the correct verb form to fill in the blank.  
The train \_\_\_\_\_ quickly along the tracks.  
a) speeded b) sped c) speed d) speeding

3 The Shanghai Maglev is the fastest train in the world. It can travel 265 mph (430 km/h). The reason it can move so quickly is that it has no wheels. Instead, the train uses electromagnets to levitate just above the tracks.  
What does the word levitate mean?  
a) float b) speed c) electrify d) attract

4 Why do you think there are no high-speed rail systems in the United States? List 3 possible reasons.

**Editing:** plural nouns, main idea, verb form, context clues/noun/verb, editing.

# ROBOTS

1 What is a Robot  
When you imagine a robot, you may picture a machine that looks and acts like a person. That would only be partly correct. A robot is a machine. Specifically, it is a machine that does tasks without help from a person. However, most robots do not look like people at all. They are built to perform specific tasks, so how they look depends on what they were built to do. For example, a robot that is meant to work in a factory might look a little like an arm with a hand for holding and moving the parts of whatever it is building.

Summarize this passage:

\_\_\_\_\_

\_\_\_\_\_

\_\_\_\_\_

\_\_\_\_\_

\_\_\_\_\_

2 Jake: What do you get when cross a robot with a tractor?

3 Which of these is not true about the word *robotic*?  
a) It is an adjective.  
b) It would come after the word *robber* in the dictionary.  
c) It has three syllables.  
d) It is a compound word.

4 I use my robot everyday.  
Kayla needed her wrench to repair the robot.  
The robot store used its hand to gently pet the kitten.

5 Write *have* or *has* in each blank.  
The robots \_\_\_\_\_ mechanical arms.  
She \_\_\_\_\_ a robot in her kitchen.  
That robot \_\_\_\_\_ the ability to talk.  
Robots \_\_\_\_\_ been used to build cars.

6 Add the suffix -ous or -ness to the base words in the box and use the new words to complete the sentences.  
lazy danger monster useful  
Robots can do work that is too \_\_\_\_\_ for humans.  
We saw a movie about a \_\_\_\_\_ robot that \_\_\_\_\_.  
The \_\_\_\_\_ of robots in a factory cannot be \_\_\_\_\_.  
\_\_\_\_\_ is sometimes a problem for humans.

7 In some science fiction stories, robots have \_\_\_\_\_ the world. Do you think this could ever really happen?

**Editing:** Possessive pronouns, summarizing, word work, context clues/synonym, subject-verb agreement, suffixes.

Bonus Digital Material!

More Fun Stuff!

1 Choose the synonym for the underlined word.  
Robots can be used for tireless work that most humans would find boring.  
a) dangerous b) hard c) important d) dull

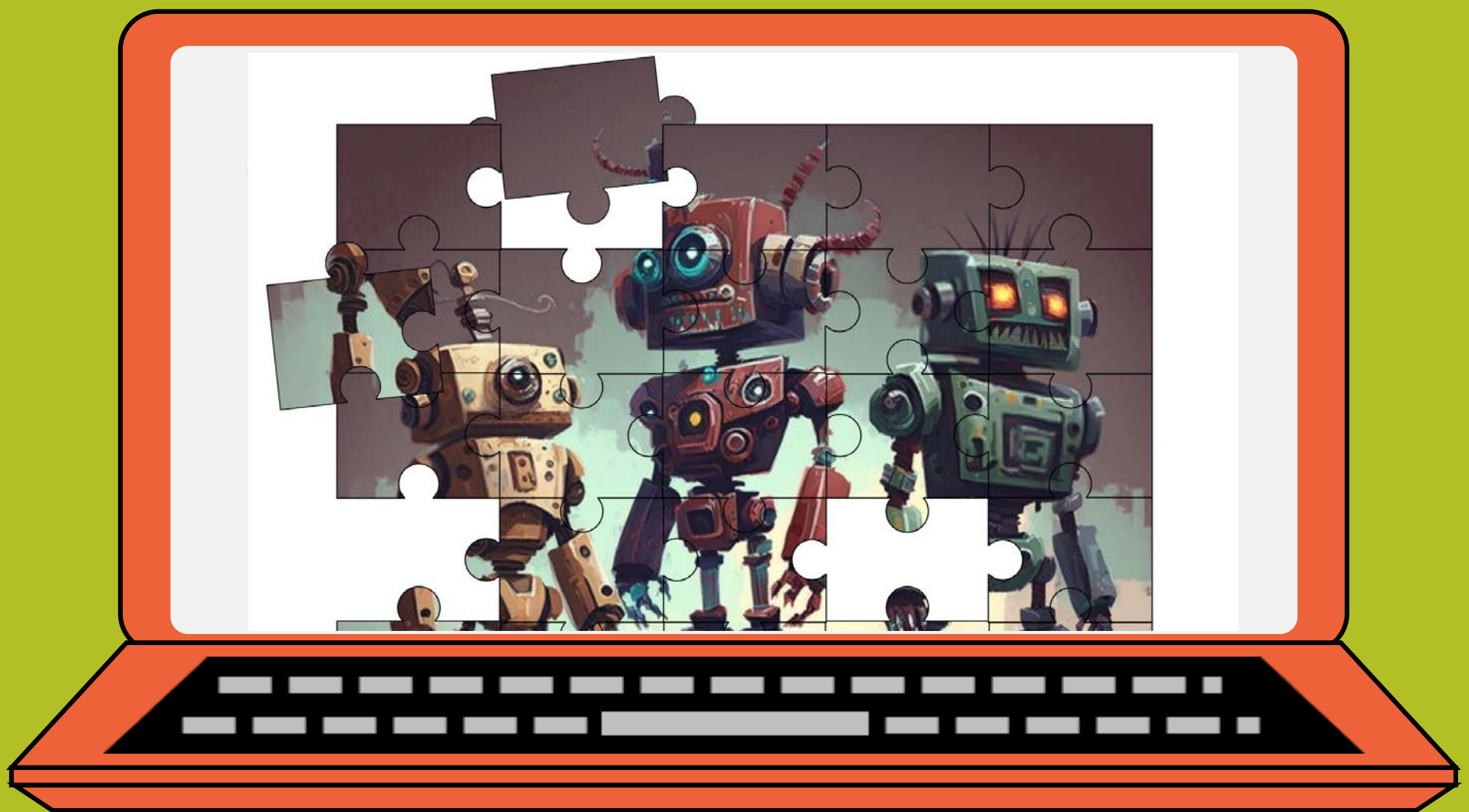
2 Which figure of speech is used in the sentence?  
The sun was a yellow ball in the clear blue sky.  
a) personification b) metaphor c) alliteration d) hyperbole

3 The sun peeked timidly through the clouds.  
Sue studied the sun to try to tell the time.

4 A Sun is Born  
years ago. I like all the \_\_\_\_\_.

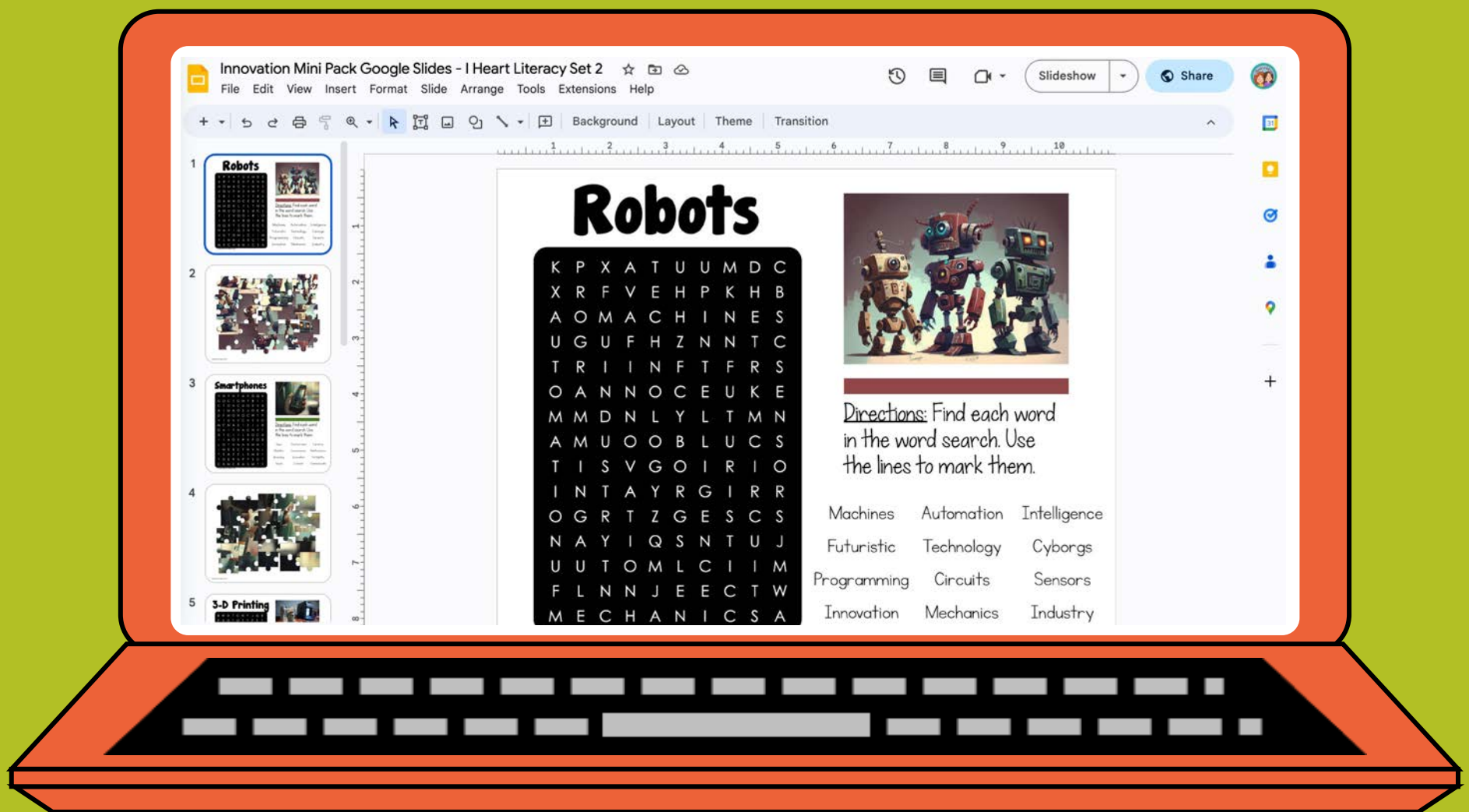
**Editing:** context clues/synonym, context clues/noun/verb, editing.

# DIGITAL EXTRAS



Great for Fast Finishers!

# GOOGLE SLIDES



Easy to Assign

**While each page is different, they do have some elements in common. Each page features:**

- **6 standards-based ELA/Reading activities**
- **An open-ended bonus activity**
- **A short reading passage with questions.**
- **A theme-based joke or fun fact**
- **A list of the skills addressed at the bottom**
- **A link to digital extras**



# What teachers are saying:

My students really enjoy I Heart Literacy activities. They cover topics that kids find very engaging. I love them because there is no prep and they include quality text and activities.

